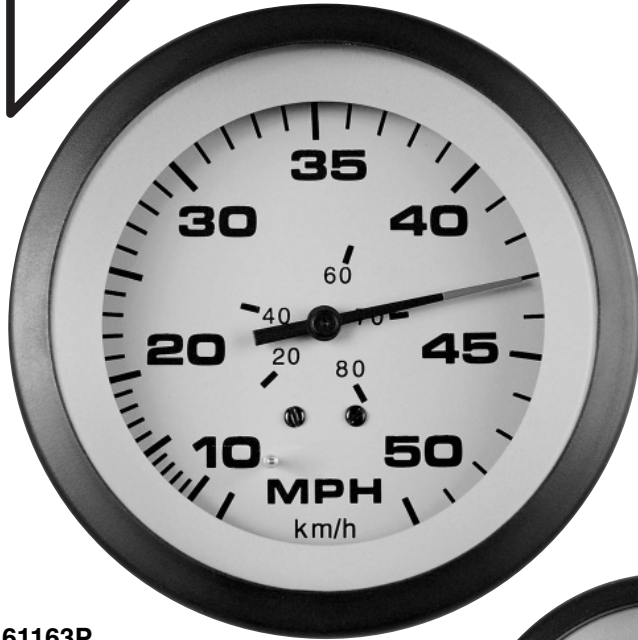


Teleflex Marine Sahara

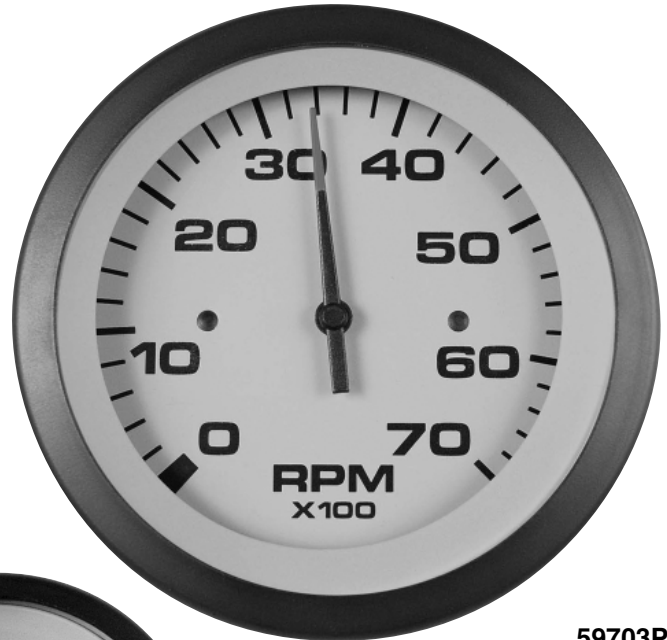
Teleflex
Signature
Series



Our hottest OEM instruments! With crisp tan dials and fire-orange pointer tip, Sahara gives any dash the elegant OEM look. Combined red through-dial and white perimeter lighting provide great night readability. These aren't merely "close enough" — they're the real thing!



61163P



59703P



59707P

Cutouts:

3" gauge: 3-13/32"

2" gauge: 2-1/8"

LENS/BEZEL
PROFILE



DIMENSIONS: pages 324, 328
OVERVIEW: page 288
SENDERS/OPTIONS: page 318
SUPPORT: www.teleflexmarine.com
or call 941-907-1000

Features:

- Tan dial and retainer, black graduations and numerals, black pointer with fire-orange tip.
- Scratch resistant curved glass lenses, with black matte, near-flush bezels.
- U.S. and metric scales, with ISO symbols, where appropriate.
- White perimeter and red thru-dial lighting.
- Optional add-on square bezels for modular appearance.

premium
instruments

INSTRUMENTS signature series

Selection Guide

GAUGE DESCRIPTION	SIZE	DIAL RANGE	SENDER CODE	INSTRUMENT PART NUMBER
Clock-Quartz:	2"	12 Hour	NONE REQ'D	61166P
Fuel Gauge:	2"	E-1/2-F	REQUIRES "F"	59707P
Oil Pressure Gauge (Electric):	2"	0-80 PSI	REQUIRES "C"	59705P
Speedometer Kits:				
Low Speed Range (Pitot type)	3"	5-35 MPH	INCLUDES "G"	61826P
50 MPH (Pitot type)	3"	10-50 MPH	INCLUDES "G"	61163P
65 MPH (Pitot type)	3"	10-65 MPH	INCLUDES "G"	59704P
80 MPH (Pitot type)	3"	20-80 MPH	INCLUDES "G"	63076P
Systems Check - Evinrude/Johnson:	2"	SYSTEM DATA	BY ENG. MFR.	66956P
Tachometer (Electric):				
O/B & 4-Stroke Gas Engines*	3"	0-7000 RPM	O/B ALT./COIL	59703P
Systems Check - Evinrude/Johnson	3"	0-7000 RPM	O/B ALT./COIL	61901P
Trim Gauges (Outboard, I/O):				
Evinrude/Johnson Outboard	2"	UP-DOWN	BY ENG. MFR.	61908P
Honda Outboards	2"	UP-DOWN	BY ENG. MFR.	62369P
Mariner/Merc/Cobra/Volvo DP, SX, Yamaha 2001 and on	2"	UP-DOWN	BY ENG. MFR.	59709P
Suzuki 4-Stroke, 2002 to date	2"	UP-DOWN	BY ENG. MFR.	61908P
Voltmeter-12 Volt:	2"	8-18 VDC	NONE REQ'D	59708P
Warning Light Gauge - Suzuki:	2"	SYSTEM DATA	BY ENG. MFR.	65695BMDP
Water Pressure Kits (Outboard):**				
(Each kit includes fittings and 20 feet of tubing)	2"	15 PSI	INCLUDES "WP"	61902P
	2"	30 PSI	INCLUDES "WP"	61870P
Water Temp. Gauge (I/O, I/B):	2"	120-240°F	REQUIRES "D"	59706P

Senders:

Code C (Oil Pressure)

Single Station:

80 PSI - **IA15001**

Dual Station:

80 PSI - **IA15003**

Code D (Temperature)

Single Station:

1/8 NPT, 120-240°F - **52320S010**

1/4 NPT, 120-240°F - **52320S004**

3/8 NPT, 120-240°F - **52320S009**

1/2 NPT, 120-240°F - **52320S003**

Dual Station:

3/8 NPT, 120-240°F - **52320S018**

1/2 NPT, 120-240°F - **52320S017**

Code F (Fuel) - **90424P**

Code G (Pitot Tube) - **56973P** (replacement)

* Mariner 30 & 40 HP (2-cylinder) engines require a module (Mercury P/N 17461A2) when using any of these tachometers. Not tested for non-original-equipment (aftermarket) ignition systems. Not for diesels.

** Adapter (P/N 61886P) is required for Yamaha.



Boxed Sets

BASIC OUTBOARD SET:

Tachometer, 65 MPH speedometer (with pitot tube), Fuel Gauge (compatible with common marine senders), and Voltmeter. Matching Trim Gauges, Hourmeters and Water Pressure or Temperature Kits are available separately. (Not for diesels.)

Sahara.....65481P



BASIC INBOARD/STERN DRIVE SET:

Tachometer, 65 MPH speedometer (with pitot tube), Fuel Gauge, Water Temperature Gauge, Oil Pressure Gauge (all compatible with common marine senders), and Voltmeter. Matching Trim Gauges are available separately for stern drive applications. (Not for diesels.)

Sahara.....65485P

Optional Accessories:

2" Aircraft Style BezelIA65476

3" Aircraft Style BezelIA65477

12-Volt Light & Socket (wedge base)IA62995

Panel Mount AGC-type Fuse HolderIA17537

Tubing for Pitot Tube, 100-foot Coil.....56353P

Tach Harness, pre-1996 OMC (3-wire). IH14767

Tach Harness, Merc/Mariner (5-wire) ... IH15105

Pack O' Pitots (12 Pitot Tubes in

Shipper/P.O.P. Display)59677P

Teleflex Electrical Gauge Tester 55920

(Works on all Teleflex electrical instruments. Instructions provided.)