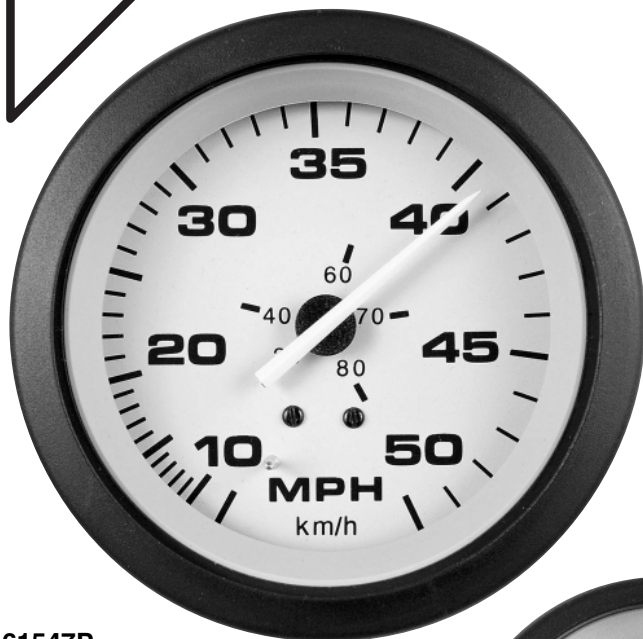


# Teleflex Marine Driftwood

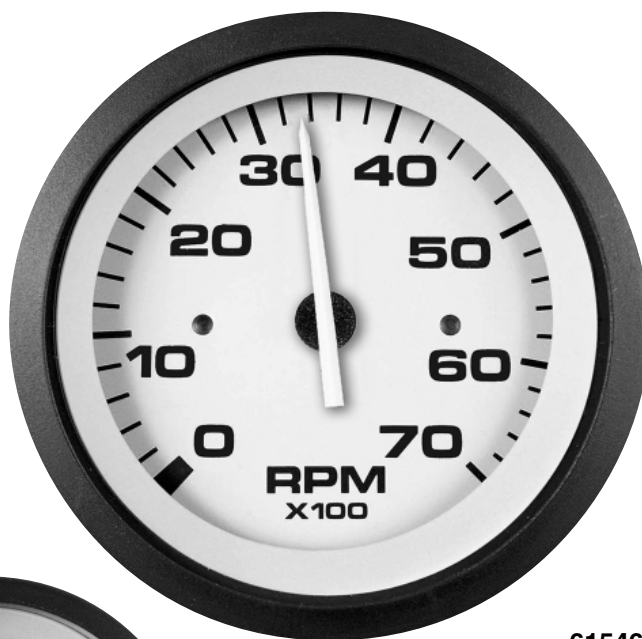
Teleflex  
Signature  
Series



Driftwood features light gray dials, clean black numerals and a black pointer hub with white staff. These instruments lend a sophisticated look to any dash. Combination blue through-dial and white perimeter lighting are included for excellent readability at night.



61547P



61546P



61549P

## Cutouts:

3" gauge: 3-13/32"  
2" gauge: 2-1/8"

LENS/BEZEL  
PROFILE



DIMENSIONS: pages 324, 328  
OVERVIEW: page 288  
SENDERS/OPTIONS: page 318  
SUPPORT: [www.teleflexmarine.com](http://www.teleflexmarine.com)  
or call 941-907-1000

## Features:

- Light gray dial, black graduations/numerals, white pointer staff.
- Scratch resistant curved glass lenses, with black, near-flush bezels.
- U.S. and metric scales, with ISO symbols, where appropriate.
- White perimeter and blue thru-dial lighting.
- Optional add-on square bezels for modular appearance.

premium  
instruments

INSTRUMENTS signature series

# Selection Guide

| GAUGE DESCRIPTION  | SIZE | DIAL RANGE  | SENDER CODE   | INSTRUMENT PART NUMBER |
|--|------|-------------|---------------|------------------------|
| <b>Fuel Gauge:</b>   | 2"   | E-1/2-F     | REQUIRES "F"  | 61549P                 |
| <b>Hourmeter:</b>  | 2"   | 10,000 Hrs. | NONE REQ'D    | 62952P                 |
| <b>Oil Pressure Gauge (Electric):</b>  | 2"   | 0-80 PSI    | REQUIRES "C"  | 61550P                 |
| <b>Speedometer Kits:</b>   |      |             |               |                        |
| Low Speed Range (Pitot type)   | 3"   | 5-35 MPH    | INCLUDES "G"  | 62775P                 |
| 50 MPH (Pitot type)  | 3"   | 10-50 MPH   | INCLUDES "G"  | 61547P                 |
| 65 MPH (Pitot type)  | 3"   | 10-65 MPH   | INCLUDES "G"  | 62372P                 |
| 80 MPH (Pitot type)  | 3"   | 20-80 MPH   | INCLUDES "G"  | 63516P                 |
| <b>Tachometer (Electric):</b>  |      |             |               |                        |
| O/B & 4-Stroke Gas Engines*  | 3"   | 0-7000 RPM  | O/B ALT./COIL | 61546P                 |
| Systems Check - Evinrude/Johnson   | 3"   | 0-7000 RPM  | O/B ALT./COIL | 62698P                 |
| <b>Tachometer/Hourmeter (Electric):</b>  |      |             |               |                        |
| O/B & 4-Stroke Gas Engines*  | 3"   | 0-7000 RPM  | O/B ALT./COIL | 63941P                 |
| <b>Trim Gauges (Outboard, I/O):</b>  |      |             |               |                        |
| Evinrude/Johnson Outboard  | 2"   | UP-DOWN     | BY ENG. MFR.  | 62373P                 |
| Honda  | 2"   | UP-DOWN     | BY ENG. MFR.  | 62375P                 |
| Mariner/Merc/Cobra/Volvo DP, SX,<br>Yamaha 2001 and on                               | 2"   | UP-DOWN     | BY ENG. MFR.  | 61551P                 |
| Suzuki 4-Stroke, 2002 to date  | 2"   | UP-DOWN     | BY ENG. MFR.  | 62373P                 |
| <b>Voltmeter-12 Volt:</b>  | 2"   | 8-18 VDC    | NONE REQ'D    | 61548P                 |
| <b>Warning Light Gauge - Suzuki:</b>   | 2"   | SYSTEM DATA | BY ENG. MFR.  | 65697BMDP              |
| <b>Water Pressure Kit (Outboard):**</b><br>(Kit includes fittings/20 feet of tubing) | 2"   | 30 PSI      | INCLUDES "WP" | 62960P                 |
| <b>Water Temp. Gauge (I/O, I/B):</b>   | 2"   | 120-240°F   | REQUIRES "D"  | 61552P                 |

\* Mariner 30 & 40 HP (2-cylinder) engines require a module (Mercury P/N 17461A2) when using any of these tachometers. Not tested for non-original-equipment (aftermarket) ignition systems. Not for diesels.

\*\* Adapter (P/N 61886P) is required for Yamaha.

## Senders:

### Code C (Oil Pressure)

Single Station:

80 PSI - **IA15001**

Dual Station:

80 PSI - **IA15003**

### Code D (Temperature)

Single Station:

1/8 NPT, 120-240°F - **52320S010**

1/4 NPT, 120-240°F - **52320S004**

3/8 NPT, 120-240°F - **52320S009**

1/2 NPT, 120-240°F - **52320S003**

Dual Station:

3/8 NPT, 120-240°F - **52320S018**

1/2 NPT, 120-240°F - **52320S017**

### Code F (Fuel) - 90424P

### Code G (Pitot Tube) - 56973P (replacement)

## Optional Accessories:

2" Aircraft Style Bezel .....IA65476

3" Aircraft Style Bezel .....IA65477

12-Volt Light & Socket (wedge base) ....IA62995

Panel Mount AGC-type Fuse Holder .....IA17537

Tubing for Pitot Tube, 100-foot Coil .....56353P

Tach Harness, pre-1996 OMC (3-wire). IH14767

Tach Harness, Merc/Mariner (5-wire) ... IH15105

Pack O' Pitots (12 Pitot Tubes in

Shipper/P.O.P. Display) .....59677P

Teleflex Electrical Gauge Tester ..... 55920

(Works on all Teleflex electrical instruments. Instructions provided.)

